

Manual for Floptotics and eFlops

EDSER[®]

Contents

How to Order..... 4

Taking measurement with Edser Sizer..... 9

Taking measurement without the sizer..... 11

Specific Cases..... 11

Available Sizes..... 11

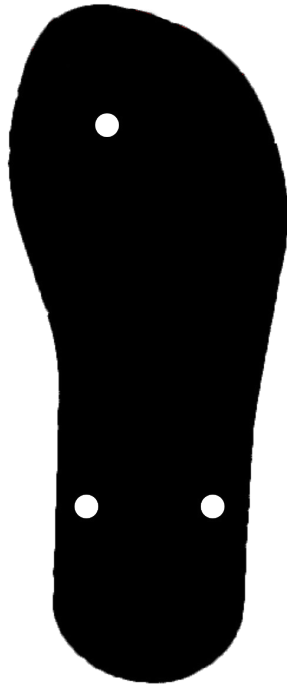
How to Order

When you place an order for Flopthotics or eFlops we will need you to provide us with the following information:

- A scan of the patients feet, or if you don't have a scanner, send the plaster cast or foam impression kit.
- EDSER Sizer Number (If you do not have sizers, please ask us for them as soon as possible). In case you need to place the order and you can't wait for us to send you the Sizers, you can provide us with a tracing of the foot in weight bearing...with a line 200mm length, as a scale of reference (you will see how to do it later in this handbook).
- Complete the order form on our Web APP, where you must enter the data corresponding to the model you want, including color and materials, as well as the prescription/components and the patients shoe size.

It is important to understand that even when the custom base is custom made to measure, the straps are selected according to the shoe size. Therefore if the patient has a foot with deformities or a size/shape quite out of the ordinary, it will be necessary to take and facilitate additional measures, as you will see later in this manual.

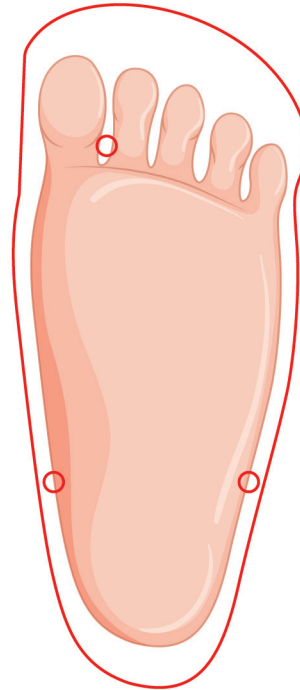
Taking the measurement with Edser Sizers



The EDSER Sizers are our templates for correct standardization of the foot measurement process, to manufacture your custom flop. You will have 13 numbered sizers, from which you can choose the one that best suits your patient. You can even combine them if necessary (i.e. the length of a 7 with the width of a 9)

* If you do not have the Sizers, please contact EDSER to request a set.

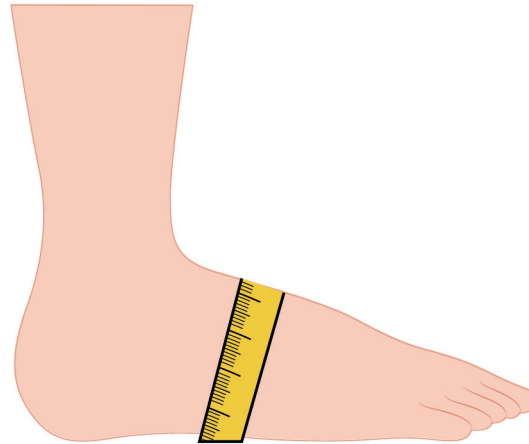
Place the patient's foot on the appropriate sizer, and make sure the sizer is at least 5mm larger all the way around the patients foot.





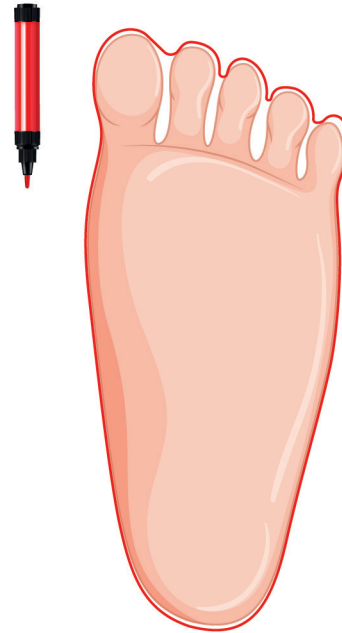
When placing your foot on the sizer, make sure it is in the correct position by placing a pen or pencil on the mark hole/mark for the strap that goes between the toes, as seen in the image. Remember that there must be at least 5mm of space around the foot.

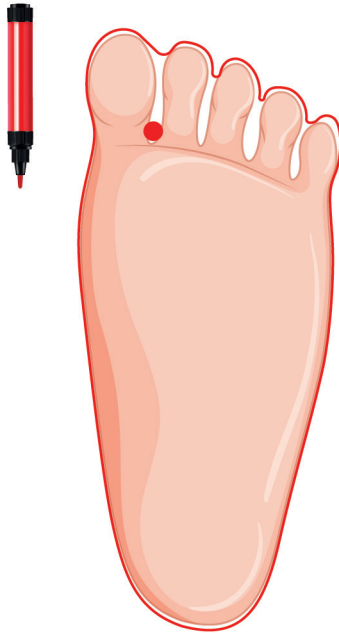
In special cases, on feet with size/shape outside the norm, you will need to take measurement from the medial side of the transverse arch across the dorsal aspect of the foot to the lateral side. This way we can know the size of the straps the patient needs.



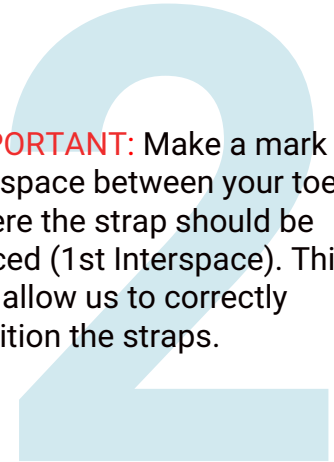
Taking the
measurement
without the Sizer

Foot Contour Tracing. In case you do not have a sizer and cannot wait for one, you must send us a copy/scan of the tracing of each foot, as shown in the image.

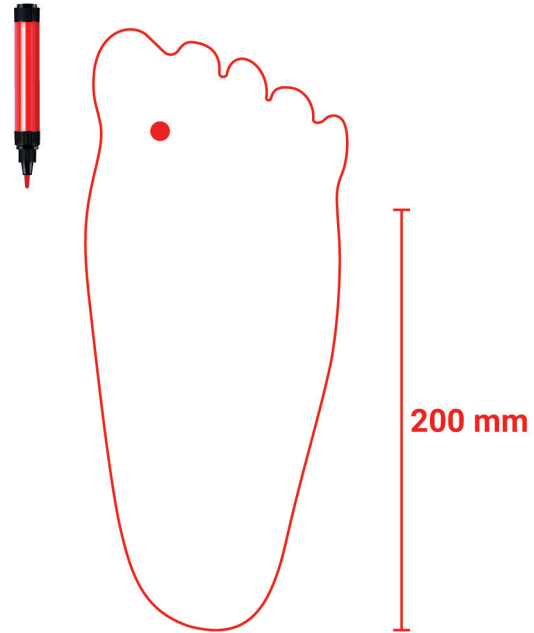




IMPORTANT: Make a mark in the space between your toes where the strap should be placed (1st Interspace). This will allow us to correctly position the straps.



Next to the tracing, draw a 200mm line. This acts as a reference, to ensure that when the scan/copy of the layout you send us is printed in our system, the scale is correct.



Specific Cases

In fairly deformed feet or feet with size/shape outside the norm, we may need some extra measures such as:

- Heel Width
- Width at the first metatarsophalangeal joint (across the metatarsals)
- Circumference of the first metatarsophalangeal joint
- Circumference at the instep/medial arch

Available Sizes

Available Sizes - eFlops			
Shoe Size	EU	U.K.	USA
Male	41-46	7-11	9-13
Female	36-41	4-7.5	6-10

EDSER[®]